

THE INDEPENDENT FACILITATORS

Gloria Sherman, M.A., M.Ed., LPC

Gloria is a middle school counselor. She has worked over 30 years with parents and children. She is a parent and grandparent. She utilizes these skills to help her grandchildren become responsible

Sharon Whitson, RSST

Sharon is the program manager of the Family Focus Mentor Program. Sharon has over 25 years assisting families. She is a parent. She demonstrates to her clients how to use these skills daily.

Each Independent Facilitator has attended training at the Love and Logic Institute, Inc..



Let's teach our children to be the best they can be!

◆ Becoming a Love and Logic Parent®

The class is taught in six two-hour sessions (12 hours total instructional time). Topics cover all aspects of parenting from toddler to teens.

Participants will:

See instructional and humorous video tapes of Jim Fay, Dr. Foster Cline and Dr. Charles Fay of the Love and Logic Institute, Inc

Do exercises in the participant handbook designed to enhance learning.

Experiment with the techniques at home each week to get the most out of each class

Solve problems and share experiences with other class members about specific parenting issues

Have more fun than you are suppose to have in a parenting workshop

Learn how to help your child be :

Responsible

Solve their own problems

Obtain tools for coping with the real world

Form a good relationship with you

Have an interest in school

Do chores

Much, much more...

Did you know...

Anger and frustration on your part actually fuels your child's misbehavior!!!!

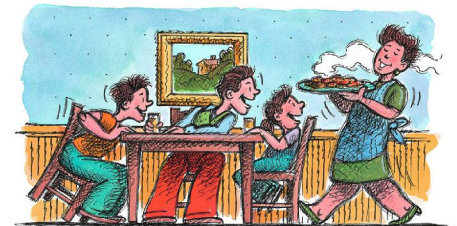
2008-2009 BECOMING A LOVE AND LOGIC PARENT®



Parenting Partnership

www.parenting-partnership.com

Learn simple, loving techniques that establish effective limits without threats and anger



For information and to register please call

Parenting Partnership

(810) 667-1544

(810) 664-2073

Email: classes@parenting-partnership.com

Register online:

www.parenting-partnership.com

PRE-REGISTRATION IS REQUIRED

**All Classes are held once per week,
for six weeks, from 6:30-8:30 in the
evening**

MONDAY

October 6-November 17, 2008
Lapeer Intermediate School District Office
1996 W. Oregon Lapeer
Facilitated by : Gloria Sherman

WEDNESDAY

October 15 – November 19, 2008
Almont Middle School
4624 Kidder Road Almont
Facilitated by: Sharon Whitson

TUESDAY

January 20 – February 24, 2009
Lapeer Intermediate School District Office
1996 W. Oregon Lapeer
Facilitated by: Sharon Whitson

THURSDAY

January 29 – March 5, 2009
Ruth Fox Elementary
North Branch
Facilitated by: Gloria Sherman

TUESDAY

February 24 – March 31, 2009
Zemmer Jr. High School
1920 W. Oregon Lapeer
Facilitated by : Gloria Sherman

MONDAY

March 16 – April 20, 2009
Lapeer Intermediate School District Office
1996 W. Oregon Lapeer
Facilitated by: Sharon Whitson

TUESDAY

April 21 – May 26, 2009
Zemmer Jr. High School
1920 W. Oregon Lapeer
Facilitated by : Gloria Sherman

THURSDAY

May 7 -June 11, 2009
Lapeer Intermediate School District Office
1996 W. Oregon Lapeer
Facilitated by: Sharon Whitson

TUESDAY

August 25– September 29, 2009
Lapeer Intermediate School District Office
1996 W. Oregon Lapeer
Facilitated by: Sharon Whitson

**Certificates awarded upon
successful completion of the class.**

Special Deal
**Have you attended one of our
classes previously and want a
refresher?**
**Bring a new person to class and
you can attend for free!**

Registration Form
**Becoming a Love and Logic
Parent @Class**

___Single Rate \$42.00

___Couple Rate \$62.00

Name: _____

Address: _____

City: _____ Zip _____

Phone: _____

E-Mail _____

Starting Date of Class: _____

Make checks payable to:
Parenting Partnership
PO Box 751
Lapeer, Michigan 48446
Phone: (810) 667-1544 or
(810) 664-2073
Fax: (810) 667-1544
E-mail: classes@parenting-partnership.com
Register online:
www.parenting-partnership.com