

## The Facilitators

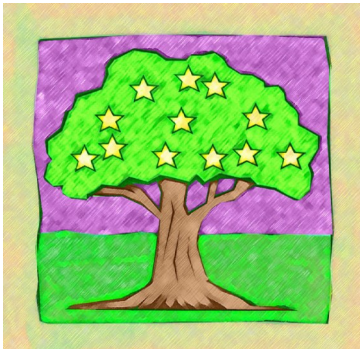
*Gloria Sherman, M.A., M.Ed., LPC*

Gloria is a middle school counselor. Gloria has worked over 30 years with parents and children. Gloria has taught the Becoming a Love and Logic Parent Program over 10 years. Gloria is a parent and grandparent. Gloria utilizes these skills to help her 7 grandchildren become responsible and fun to be around.

*Sharon Whitson, RSST*

Sharon is the program manager of the Family Focus Mentor Program. Sharon has over 25 years assisting families. Sharon has taught the Becoming a Love and Logic Parent Program over 10 years. Sharon is a parent. Sharon demonstrates to her clients how to use these skills daily.

Each Independent Facilitator has attended training at the Love and Logic Institute, Inc.



Let's teach our children to be the best they can be!

## Becoming a Love and Logic Parent®

The class is taught in six two-hour sessions (12 hours total instructional time). Topics cover all aspects of parenting from toddler to teens.

Participants will:

See instructional and humorous video tapes of Jim Fay, Dr. Foster Cline and Dr. Charles Fay of the Love and Logic Institute, Inc

Do exercises in the participant handbook designed to enhance learning.

Experiment with the techniques at home each week to get the most out of each class

Solve problems and share experiences with other class members about specific parenting issues

Have more fun than you are suppose to have in a parenting workshop

Learn how to help your child be :

- ♥ Responsible
- ♥ Solve their own problems
- ♥ Obtain tools for coping with the real world
- ♥ Form a good relationship with you
- ♥ Have an interest in school
- ♥ Do chores
- ♥ Much, much more...

**Wise parents wait until they are calm and have a solid plan before delivering consequences**

## Becoming a Love and Logic Parent®

2011-2012 Classes



**Parenting Partnership**

[www.parenting-partnership.com](http://www.parenting-partnership.com)




**Setting Limits without relationships won't work. It only creates power struggles!**

For information and to register please call  
Parenting Partnership  
(810) 667-1544  
(810) 664-2073

Email:  
[classes@parenting-partnership.com](mailto:classes@parenting-partnership.com)

Register online:  
[www.parenting-partnership.com](http://www.parenting-partnership.com)



# Parenting Classes 2011-2012

## PRE-REGISTRATION IS REQUIRED

All Classes are held once per week, for six weeks, from 6:30-8:30 in the evening

### TUESDAY

October 11– November 15, 2011  
Family Literacy Center  
311 Higgins Street, Lapeer  
**Behind the Lapeer Post Office**  
Facilitated by : Gloria Sherman

### MONDAY

November 7 – December 12, 2011  
Lapeer Intermediate School District Office  
1996 W. Oregon Lapeer  
Facilitated by: Sharon Whitson

### TUESDAY

January 17 – February 21, 2012  
Lapeer Intermediate School District Office  
1996 W. Oregon Lapeer  
Facilitated by: Gloria Sherman

### THURSDAY

February 16 - March 22, 2012  
Lapeer Intermediate School District Office  
1996 W. Oregon Lapeer  
Facilitated by: Sharon Whitson

### WEDNESDAY

March 14 – April 18, 2012  
Lapeer Intermediate School District Office  
1996 W. Oregon Lapeer  
Facilitated by Gloria Sherman

### THURSDAY

April 12 – May 17, 2012  
Lapeer Intermediate School District Office  
1996 W. Oregon Lapeer  
Facilitated by: Sharon Whitson

### TUESDAY

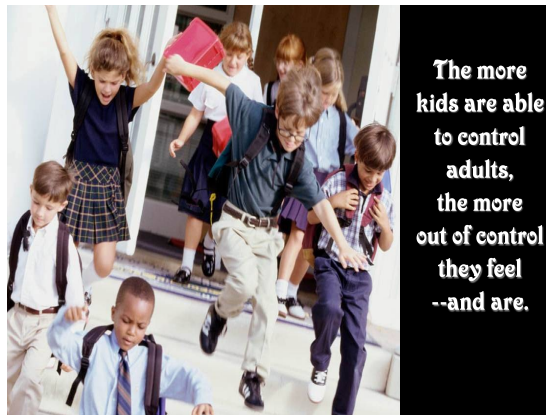
May 15–June 19, 2012  
Family Literacy Center  
311 Higgins Street, Lapeer  
**Behind the Lapeer Post Office**  
Facilitated by Gloria Sherman

### MONDAY

June 11 – July 16, 2012  
Lapeer Intermediate School District Office  
1996 W. Oregon Lapeer  
Facilitated by : Sharon Whitson

### THURSDAY

August 23 – September 27, 2012  
Lapeer Intermediate School District Office  
1996 W. Oregon Lapeer



The more  
kids are able  
to control  
adults,  
the more  
out of control  
they feel  
--and are.

Parents may attend the class  
for Free IF Referred by DHS

## Registration Form

### Becoming a Love and Logic Parent ®Class

\_\_\_ Single Rate \$42.00

\_\_\_ Couple Rate \$62.00

Name: \_\_\_\_\_

Address: \_\_\_\_\_

City: \_\_\_\_\_ Zip \_\_\_\_\_

Phone: \_\_\_\_\_

E-Mail \_\_\_\_\_

Starting Date of Class: \_\_\_\_\_

Make checks payable to:  
**Parenting Partnership**

P.O. Box 751  
Lapeer, Michigan 48446

Phone: (810) 667-1544 or (810) 664-2073

Fax: (810)667-1544

E-mail:

[classes@parenting-partnership.com](mailto:classes@parenting-partnership.com)

Register online at:

[www.parenting-partnership.com](http://www.parenting-partnership.com)